

Santa Anita Ave between Hastings St and Santa Rosa Ave
November 23, 2020 To November 27, 2020



The data presented here is for information purposes only and should not be considered authoritative for construction, geotechnical, engineering, navigational, legal, or other site-specific uses. The information shared is owned by the Transportation Division of the Engineering Department at the District of Saanich. Accuracy is not guaranteed.

Start Date: 23-Nov-20
 Start Time: 20:00
 Station ID: R0974-01

Location 1: Santa Anita Ave between Hastings St and Santa Rosa Ave

Note:

DATE:	November 23, 2020		November 24, 2020		November 25, 2020		November 26, 2020		November 27, 2020		WK AVG		WK AVG	HOURLY
	MON		TUE		WED		THURS		FRI		NB	SB	CH 1+2	%
Time:	NB	SB	NB	SB	NB	SB	NB	SB	NB	SB	NB	SB		
12-1 AM			1	0	0	1	1	0			1	0	1	0.1%
1-2 AM			0	1	0	2	1	1			0	1	2	0.2%
2-3 AM			0	0	0	0	0	0			0	0	0	0.0%
3-4 AM			0	0	0	0	0	0			0	0	0	0.0%
4-5 AM			2	1	3	1	1	2			2	1	3	0.4%
5-6 AM			0	1	1	2	1	1			1	1	2	0.3%
6-7 AM			12	3	9	3	12	1			11	2	13	1.7%
7-8 AM			33	8	30	8	29	5			31	7	38	4.7%
8-9 AM			104	76	100	66	90	65			98	69	167	21.0%
9-10 AM			25	16	21	16	24	13			23	15	38	4.8%
10-11 AM			13	5	24	15	17	11			18	10	28	3.6%
11-12 PM			16	22	9	11	14	13			13	15	28	3.6%
12-1 PM			25	17	18	19	31	13			25	16	41	5.1%
1-2 PM			20	9	18	18	20	19			19	15	35	4.4%
2-3 PM			73	70	76	65	64	53			71	63	134	16.8%
3-4 PM			54	27	53	21	51	28			53	25	78	9.8%
4-5 PM			31	34	45	26	36	43			37	34	72	9.0%
5-6 PM			21	14	26	28	34	20			27	21	48	6.0%
6-7 PM			11	11	15	18	16	5			14	11	25	3.2%
7-8 PM			7	5	6	11	6	15			6	10	17	2.1%
8-9 PM	5	3	2	6	8	5	2	8			4	6	10	1.2%
9-10 PM	4	8	1	4	4	6	4	7			3	6	10	1.2%
10-11 PM	3	3	1	6	2	1	1	3			2	3	5	0.6%
11-12 AM	0	1	3	0	0	2	3	1			2	1	3	0.3%
LANES			455	336	468	345	458	327			461	336	796	100.0%
TOTAL			791		813		785				800			
	MON		TUE		WED		THURS		FRI		WK AVG			

PEAK HOUR					TOTAL VEHICALS-PEAK PERIODS		2 HOUR PEAK INTERVALS					
MAX. 7 - 9 am PEAK HOUR	167	⇒	21.0%	between	8-9 AM	393	⇒	6 HR TOTAL	2 HR AM (7 - 9 AM)			
MAX. 7 - 11 am PEAK HOUR	167	⇒	21.0%	between	8-9 AM	324	⇒	4 HR TOTAL	VEH / HR	VEH / 2HR	2 HR %	
									7-8 AM	38	205	25.7%
									8-9 AM	167		
MAX. 11 am - 1 pm PEAK HOUR	41	⇒	5.1%	between	12-1 PM	24 HOUR FACTORS						
MAX. 11 am - 3 pm PEAK HOUR	134	⇒	16.8%	between	2-3 PM							
MAX. 4 - 6 pm PEAK HOUR	72	⇒	9.0%	between	4-5 PM							
MAX. 3 - 6 pm PEAK HOUR	78	⇒	9.8%	between	3-4 PM	2.02	⇒	6-24 HR FACT.	2 HR NOON (11 - 1 PM)			
						2.46	⇒	4-24 HR FACT.	VEH / HR	VEH / 2HR	2 HR %	
									11-12 PM	28	69	8.7%
									12-1 PM	41		
									2 HR PM (4 - 6 PM)			
									VEH / HR	VEH / 2HR	2 HR %	
									4-5 PM	72	119	15.0%
									5-6 PM	48		

Santa Anita Ave between Hastings St and Santa Rosa Ave

Northbound

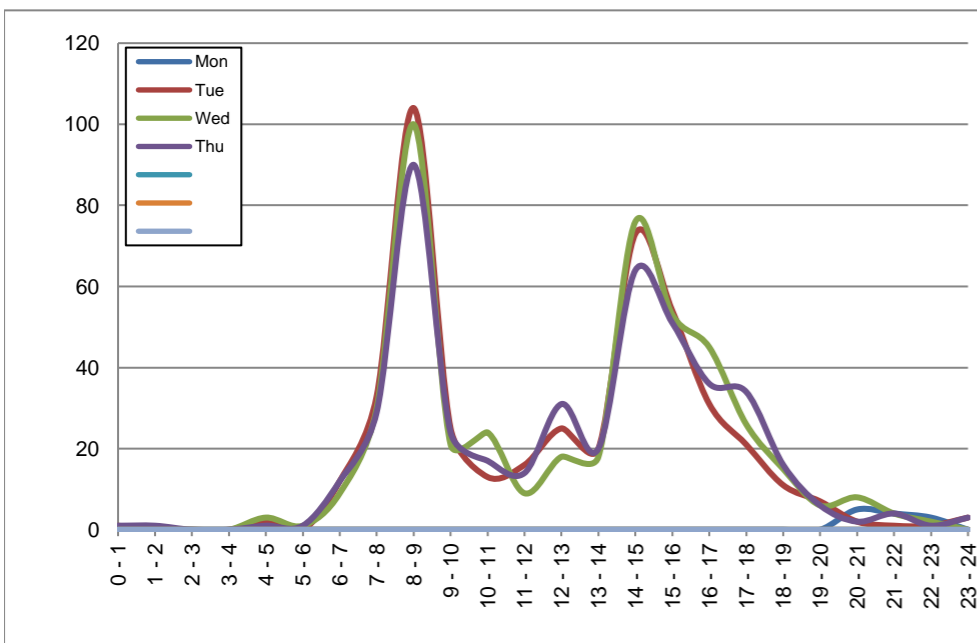
November 23, 2020 to November 26, 2020

Hourly Volumes

Time Period	Mon	Tue	Wed	Thu			
	Nov 23	Nov 24	Nov 25	Nov 26			
0 - 1		1	0	1			
1 - 2		0	0	1			
2 - 3		0	0	0			
3 - 4		0	0	0			
4 - 5		2	3	1			
5 - 6		0	1	1			
6 - 7		12	9	12			
7 - 8		33	30	29			
8 - 9		104	100	90			
9 - 10		25	21	24			
10 - 11		13	24	17			
11 - 12		16	9	14			
12 - 13		25	18	31			
13 - 14		20	18	20			
14 - 15		73	76	64			
15 - 16		54	53	51			
16 - 17		31	45	36			
17 - 18		21	26	34			
18 - 19		11	15	16			
19 - 20		7	6	6			
20 - 21	5	2	8	2			
21 - 22	4	1	4	4			
22 - 23	3	1	2	1			
23 - 24	0	3	0	3			
Day Total		455	468	458			

15-Minute Volumes

Time Start	Mon	Tue	Wed	Thu				Time Start	Mon	Tue	Wed	Thu			
	Nov 23	Nov 24	Nov 25	Nov 26					Nov 23	Nov 24	Nov 25	Nov 26			
0:00		1	0	0				12:00		8	3	6			
0:15		0	0	1				12:15		3	7	9			
0:30		0	0	0				12:30		5	4	8			
0:45		0	0	0				12:45		9	4	8			
1:00		0	0	1				13:00		7	5	6			
1:15		0	0	0				13:15		4	3	6			
1:30		0	0	0				13:30		2	6	4			
1:45		0	0	0				13:45		7	4	4			
2:00		0	0	0				14:00		3	10	5			
2:15		0	0	0				14:15		2	7	4			
2:30		0	0	0				14:30		9	5	5			
2:45		0	0	0				14:45		59	54	50			
3:00		0	0	0				15:00		34	15	11			
3:15		0	0	0				15:15		7	14	16			
3:30		0	0	0				15:30		8	10	17			
3:45		0	0	0				15:45		5	14	7			
4:00		0	0	0				16:00		8	18	14			
4:15		0	0	0				16:15		10	9	7			
4:30		1	1	0				16:30		6	10	7			
4:45		1	2	1				16:45		7	8	8			
5:00		0	0	0				17:00		9	11	9			
5:15		0	0	1				17:15		5	5	11			
5:30		0	1	0				17:30		4	5	9			
5:45		0	0	0				17:45		3	5	5			
6:00		0	1	1				18:00		0	5	2			
6:15		3	1	2				18:15		4	7	5			
6:30		4	4	4				18:30		2	2	5			
6:45		5	3	5				18:45		5	1	4			
7:00		4	3	3				19:00		0	0	1			
7:15		2	3	8				19:15		2	3	1			
7:30		18	16	10				19:30		5	2	1			
7:45		9	8	8				19:45		0	1	3			
8:00		5	6	9				20:00	2	1	1	1			
8:15		19	20	16				20:15	2	1	2	1			
8:30		46	43	34				20:30	0	0	0	0			
8:45		34	31	31				20:45	1	0	5	0			
9:00		9	8	8				21:00	1	0	2	0			
9:15		4	8	8				21:15	1	0	1	3			
9:30		8	3	3				21:30	0	0	0	0			
9:45		4	2	5				21:45	2	1	1	1			
10:00		3	7	4				22:00	1	0	2	0			
10:15		3	4	2				22:15	0	1	0	1			
10:30		3	9	6				22:30	0	0	0	0			
10:45		4	4	5				22:45	2	0	0	0			
11:00		1	1	5				23:00	0	0	0	2			
11:15		5	4	5				23:15	0	2	0	0			
11:30		4	2	2				23:30	0	0	0	0			
11:45		6	2	2				23:45	0	1	0	1			



Site notes:

Santa Anita Ave between Hastings St and Santa Rosa Ave

Southbound

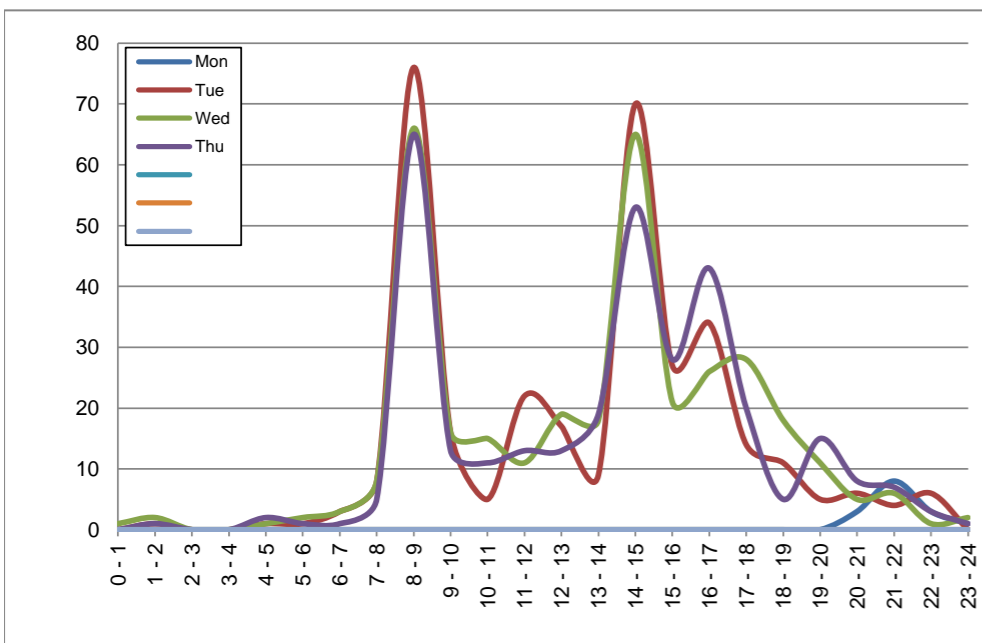
November 23, 2020 to November 26, 2020

Hourly Volumes

Time Period	Mon	Tue	Wed	Thu			
	Nov 23	Nov 24	Nov 25	Nov 26			
0 - 1		0	1	0			
1 - 2		1	2	1			
2 - 3		0	0	0			
3 - 4		0	0	0			
4 - 5		1	1	2			
5 - 6		1	2	1			
6 - 7		3	3	1			
7 - 8		8	8	5			
8 - 9		76	66	65			
9 - 10		16	16	13			
10 - 11		5	15	11			
11 - 12		22	11	13			
12 - 13		17	19	13			
13 - 14		9	18	19			
14 - 15		70	65	53			
15 - 16		27	21	28			
16 - 17		34	26	43			
17 - 18		14	28	20			
18 - 19		11	18	5			
19 - 20		5	11	15			
20 - 21	3	6	5	8			
21 - 22	8	4	6	7			
22 - 23	3	6	1	3			
23 - 24	1	0	2	1			
Day Total		336	345	327			

15-Minute Volumes

Time Start	Mon	Tue	Wed	Thu			
	Nov 23	Nov 24	Nov 25	Nov 26			
0:00		0	0	0			
0:15		0	1	0			
0:30		0	0	0			
0:45		0	0	0			
1:00		1	0	1			
1:15		0	1	0			
1:30		0	1	0			
1:45		0	0	0			
2:00		0	0	0			
2:15		0	0	0			
2:30		0	0	0			
2:45		0	0	0			
3:00		0	0	0			
3:15		0	0	0			
3:30		0	0	0			
3:45		0	0	0			
4:00		0	0	0			
4:15		0	1	1			
4:30		1	0	0			
4:45		0	0	1			
5:00		1	1	0			
5:15		0	0	1			
5:30		0	1	0			
5:45		0	0	0			
6:00		0	1	0			
6:15		1	0	0			
6:30		1	1	0			
6:45		1	1	1			
7:00		2	4	3			
7:15		1	0	1			
7:30		3	1	0			
7:45		2	3	1			
8:00		6	4	6			
8:15		13	16	9			
8:30		45	38	42			
8:45		12	8	8			
9:00		8	4	6			
9:15		5	4	4			
9:30		3	3	2			
9:45		0	5	1			
10:00		3	4	4			
10:15		0	5	3			
10:30		2	4	3			
10:45		0	2	1			
11:00		6	0	3			
11:15		3	3	4			
11:30		5	4	2			
11:45		8	4	4			
12:00			5	5	3		
12:15			3	5	2		
12:30			6	2	5		
12:45			3	7	3		
13:00			5	3	6		
13:15			0	8	3		
13:30			3	3	8		
13:45			1	4	2		
14:00			9	11	6		
14:15			12	11	12		
14:30			35	27	24		
14:45			14	16	11		
15:00			8	7	4		
15:15			8	3	11		
15:30			3	6	5		
15:45			8	5	8		
16:00			6	5	7		
16:15			11	7	11		
16:30			7	8	15		
16:45			10	6	10		
17:00			6	8	4		
17:15			3	7	4		
17:30			3	7	7		
17:45			2	6	5		
18:00			5	9	1		
18:15			2	5	3		
18:30			2	1	1		
18:45			2	3	0		
19:00			1	2	3		
19:15			2	6	6		
19:30			2	3	3		
19:45			0	0	3		
20:00	2	1	1	0			
20:15	1	1	1	3			
20:30	0	3	2	3			
20:45	0	1	1	2			
21:00	4	1	1	2			
21:15	1	1	3	2			
21:30	1	2	0	1			
21:45	2	0	2	2			
22:00	1	3	0	0			
22:15	0	1	0	0			
22:30	0	0	0	0			
22:45	2	2	1	3			
23:00	1	0	0	1			
23:15	0	0	0	0			
23:30	0	0	0	0			
23:45	0	0	2	0			



Site notes:

Vehicle Speed Summary

Saanich Engineering Department

Count Id: R0974-01

Filename: Santa Anita Ave between Hastings St and Santa Rosa Ave-Nov-2020.xlsm

Location: Santa Anita Ave between Hastings St and Santa Rosa Ave

Note:

Direction: **North-South**

Dates: **November 23, 2020 To November 27, 2020**

Filtered data

AVG. SPEED	16 mph	25 km/h
50 % SPEED	15 mph	24 km/h
85 % SPEED	19 mph	31 km/h
95 % SPEED	23 mph	36 km/h

Location Map



Santa Anita Ave between Hastings St and Santa Rosa Ave

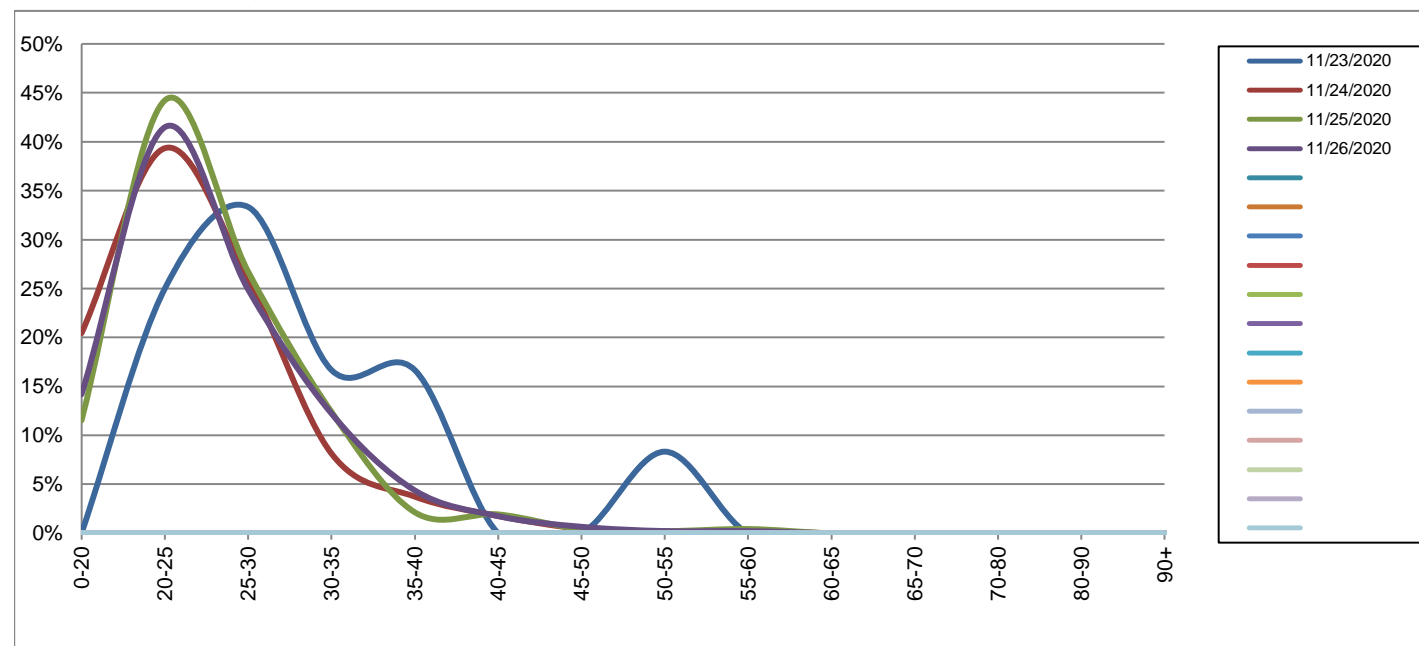
Northbound

November 23, 2020 to November 26, 2020

Daily Speed Bin Percentages															Daily Speed Bin Volumes														Total	Avg.
Bin #	1	2	3	4	5	6	7	8	9	10	11	12	13	14	1	2	3	4	5	6	7	8	9	10	11	12	13	14	Volume	Speed
Bin Speeds	0-20	20-25	25-30	30-35	35-40	40-45	45-50	50-55	55-60	60-65	65-70	70-80	80-90	90+	0-20	20-25	25-30	30-35	35-40	40-45	45-50	50-55	55-60	60-65	65-70	70-80	80-90	90+		
11/23/2020	0.0%	25.0%	33.3%	16.7%	16.7%	0.0%	0.0%	8.3%	0.0%	0.0%	0.0%	0.0%	0.0%	0.0%	0	3	4	2	2	0	0	1	0	0	0	0	0	0	12	31
11/24/2020	20.4%	39.3%	25.9%	8.1%	3.7%	1.8%	0.4%	0.0%	0.2%	0.0%	0.0%	0.0%	0.0%	0.0%	93	179	118	37	17	8	2	0	1	0	0	0	0	0	455	23
11/25/2020	11.5%	44.2%	26.7%	12.4%	2.1%	1.9%	0.4%	0.2%	0.4%	0.0%	0.0%	0.0%	0.0%	0.0%	54	207	125	58	10	9	2	1	2	0	0	0	0	0	468	25
11/26/2020	14.2%	41.5%	24.9%	12.2%	4.4%	1.7%	0.7%	0.2%	0.2%	0.0%	0.0%	0.0%	0.0%	0.0%	65	190	114	56	20	8	3	1	1	0	0	0	0	0	458	25
Total	15.2%	41.6%	25.9%	11.0%	3.5%	1.8%	0.5%	0.2%	0.3%	0.0%	0.0%	0.0%	0.0%	0.0%	212	579	361	153	49	25	7	3	4	0	0	0	0	0	1393	24

Speed Data Summary

Bin #	1	2	3	4	5	6	7	8	9	10	11	12	13	14	Total
Bin Speeds	0-20	20-25	25-30	30-35	35-40	40-45	45-50	50-55	55-60	60-65	65-70	70-80	80-90	90+	
Survey Total	212	579	361	153	49	25	7	3	4	0	0	0	0	0	1393
% Total	15.2%	41.6%	25.9%	11.0%	3.5%	1.8%	0.5%	0.2%	0.3%	0.0%	0.0%	0.0%	0.0%	0.0%	100%
Accumulated %	15.2%	56.8%	82.7%	93.7%	97.2%	99.0%	99.5%	99.7%	100.0%	100.0%	100.0%	100.0%	100.0%	100%	
Inverse Accum. %	84.8%	43.2%	17.3%	6.3%	2.8%	1.0%	0.5%	0.3%	0.0%	0.0%	0.0%	0.0%	0.0%	0.0%	
Average Speed	24 KM/H														



Site notes:

Santa Anita Ave between Hastings St and Santa Rosa Ave

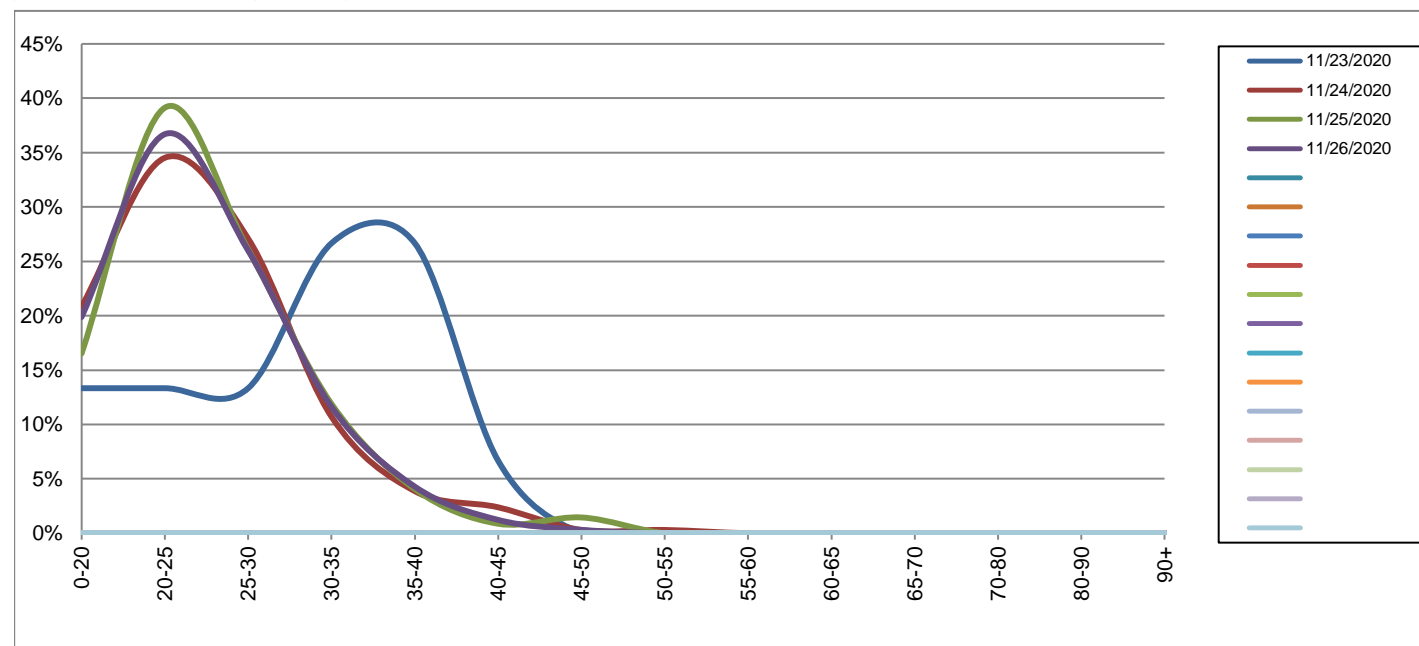
Southbound

November 23, 2020 to November 26, 2020

Daily Speed Bin Percentages															Daily Speed Bin Volumes														Total	Avg. Speed
Bin #	1	2	3	4	5	6	7	8	9	10	11	12	13	14	1	2	3	4	5	6	7	8	9	10	11	12	13	14		
Bin Speeds	0-20	20-25	25-30	30-35	35-40	40-45	45-50	50-55	55-60	60-65	65-70	70-80	80-90	90+	0-20	20-25	25-30	30-35	35-40	40-45	45-50	50-55	55-60	60-65	65-70	70-80	80-90	90+		
11/23/2020	13.3%	13.3%	13.3%	26.7%	26.7%	6.7%	0.0%	0.0%	0.0%	0.0%	0.0%	0.0%	0.0%	0.0%	2	2	2	4	4	1	0	0	0	0	0	0	0	0	15	30
11/24/2020	20.8%	34.5%	27.1%	10.7%	3.9%	2.4%	0.3%	0.3%	0.0%	0.0%	0.0%	0.0%	0.0%	0.0%	70	116	91	36	13	8	1	1	0	0	0	0	0	0	336	24
11/25/2020	16.5%	39.1%	26.1%	11.9%	4.1%	0.9%	1.4%	0.0%	0.0%	0.0%	0.0%	0.0%	0.0%	0.0%	57	135	90	41	14	3	5	0	0	0	0	0	0	0	345	24
11/26/2020	19.9%	36.7%	26.0%	11.6%	4.3%	1.2%	0.3%	0.0%	0.0%	0.0%	0.0%	0.0%	0.0%	0.0%	65	120	85	38	14	4	1	0	0	0	0	0	0	0	327	23
Total	19.0%	36.5%	26.2%	11.6%	4.4%	1.6%	0.7%	0.1%	0.0%	0.0%	0.0%	0.0%	0.0%	0.0%	194	373	268	119	45	16	7	1	0	0	0	0	0	0	1023	24

Speed Data Summary

Bin #	1	2	3	4	5	6	7	8	9	10	11	12	13	14	Total
Bin Speeds	0-20	20-25	25-30	30-35	35-40	40-45	45-50	50-55	55-60	60-65	65-70	70-80	80-90	90+	
Survey Total	194	373	268	119	45	16	7	1	0	0	0	0	0	0	1023
% Total	19.0%	36.5%	26.2%	11.6%	4.4%	1.6%	0.7%	0.1%	0.0%	0.0%	0.0%	0.0%	0.0%	0.0%	100%
Accumulated %	19.0%	55.4%	81.6%	93.3%	97.7%	99.2%	99.9%	100.0%	100.0%	100.0%	100.0%	100.0%	100.0%	100.0%	
Inverse Accum. %	81.0%	44.6%	18.4%	6.7%	2.3%	0.8%	0.1%	0.0%	0.0%	0.0%	0.0%	0.0%	0.0%	0.0%	
Average Speed	24 KM/H														



Site notes:

Santa Anita Ave between Hastings St and Santa Rosa Ave

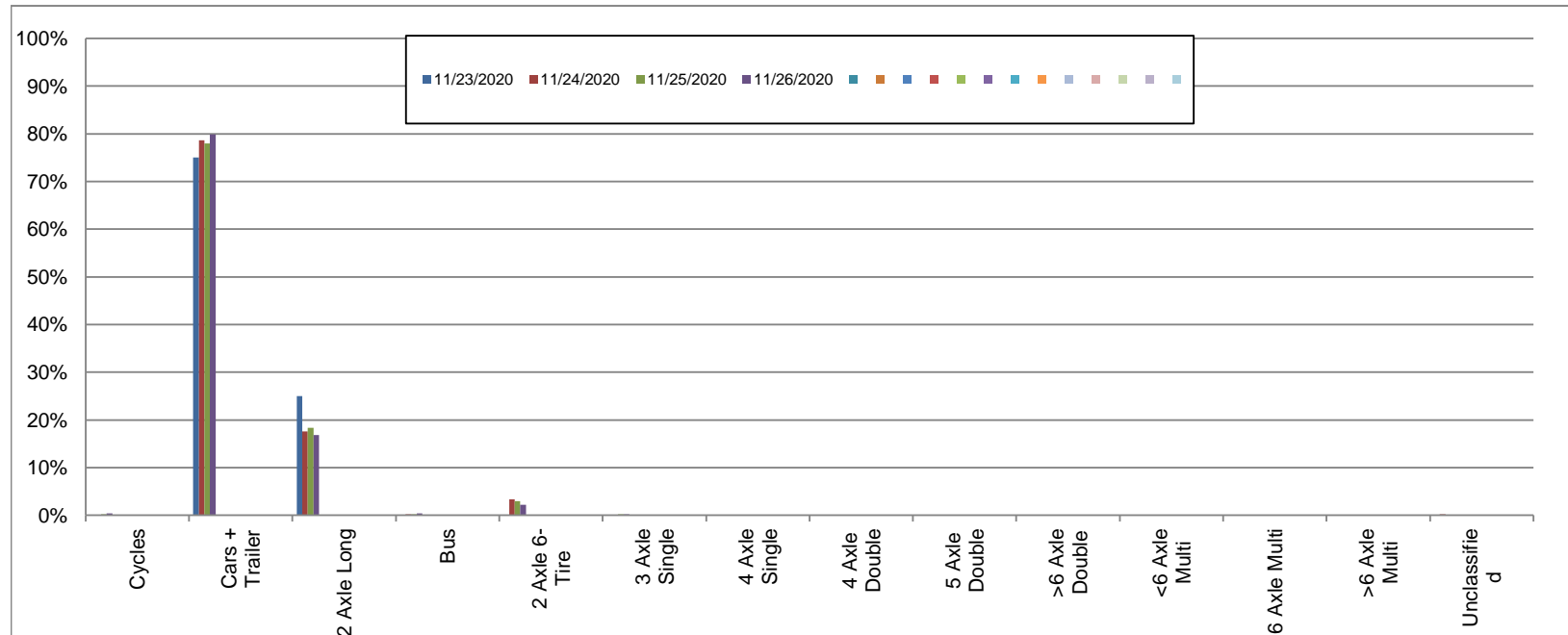
Northbound

November 23, 2020 to November 26, 2020

Daily Class Bin Percentages															Daily Class Bin Volumes														
Bin #	1	2	3	4	5	6	7	8	9	10	11	12	13	14	1	2	3	4	5	6	7	8	9	10	11	12	13	14	Total Volume
Bin Class	Cycles	Cars + Trailer	2 Axle Long	Bus	2 Axle 6-Tire	3 Axle Single	4 Axle Single	4 Axle Double	5 Axle Double	>6 Axle Double	<6 Axle Multi	6 Axle Multi	>6 Axle Multi	Unclassified	Cycles	Cars + Trailer	2 Axle Long	Bus	2 Axle 6-Tire	3 Axle Single	4 Axle Single	4 Axle Double	5 Axle Double	>6 Axle Double	<6 Axle Multi	6 Axle Multi	>6 Axle Multi	Unclassified	
11/23/2020	0.0%	75.0%	25.0%	0.0%	0.0%	0.0%	0.0%	0.0%	0.0%	0.0%	0.0%	0.0%	0.0%	0.0%	0	9	3	0	0	0	0	0	0	0	0	0	0	0	12
11/24/2020	0.0%	78.7%	17.6%	0.2%	3.3%	0.0%	0.0%	0.0%	0.0%	0.0%	0.0%	0.0%	0.0%	0.2%	0	358	80	1	15	0	0	0	0	0	0	0	0	1	455
11/25/2020	0.2%	78.0%	18.4%	0.2%	3.0%	0.2%	0.0%	0.0%	0.0%	0.0%	0.0%	0.0%	0.0%	0.0%	1	365	86	1	14	1	0	0	0	0	0	0	0	0	468
11/26/2020	0.4%	79.9%	16.8%	0.4%	2.2%	0.2%	0.0%	0.0%	0.0%	0.0%	0.0%	0.0%	0.0%	0.0%	2	366	77	2	10	1	0	0	0	0	0	0	0	0	458
Total	0.2%	78.8%	17.7%	0.3%	2.8%	0.1%	0.0%	0.0%	0.0%	0.0%	0.0%	0.0%	0.0%	0.1%	3	1098	246	4	39	2	0	0	0	0	0	0	0	1	1393

Class Data Summary

Bin #	1	2	3	4	5	6	7	8	9	10	11	12	13	14	Total Volume
Bin Class	Cycles	Cars + Trailer	2 Axle Long	Bus	2 Axle 6-Tire	3 Axle Single	4 Axle Single	4 Axle Double	5 Axle Double	>6 Axle Double	<6 Axle Multi	6 Axle Multi	>6 Axle Multi	Unclassified	Total Volume
Survey Total	3	1098	246	4	39	2	0	0	0	0	0	0	0	1	1393
% Total	0.2%	78.8%	17.7%	0.3%	2.8%	0.1%	0.0%	0.0%	0.0%	0.0%	0.0%	0.0%	0.0%	0.1%	100%
Accumulated %	0.2%	79.0%	96.7%	97.0%	99.8%	99.9%	99.9%	99.9%	99.9%	99.9%	99.9%	99.9%	99.9%	100.0%	
Inv. Accum. %	99.8%	21.0%	3.3%	3.0%	0.2%	0.1%	0.1%	0.1%	0.1%	0.1%	0.1%	0.1%	0.1%	0.0%	



Classification Descriptions

Bin #	Bin Description
1	Motorcycles
2	Passenger cars, including those with recreational trailers
3	2-axle pick-ups, vans, and RVs, including those with recreational trailers
4	Buses
5	2-axle, 6-tire single units
6	3-axle single units
7	4-axle single units
8	3-axle or 4-axle double unit
9	5-axle double unit
10	6-, 7-, or 8-axle double unit
11	5-axle multiple unit
12	6-axle multiple unit
13	7-or-more-axle multiple unit
14	Vehicles that could not be classified

Site notes:

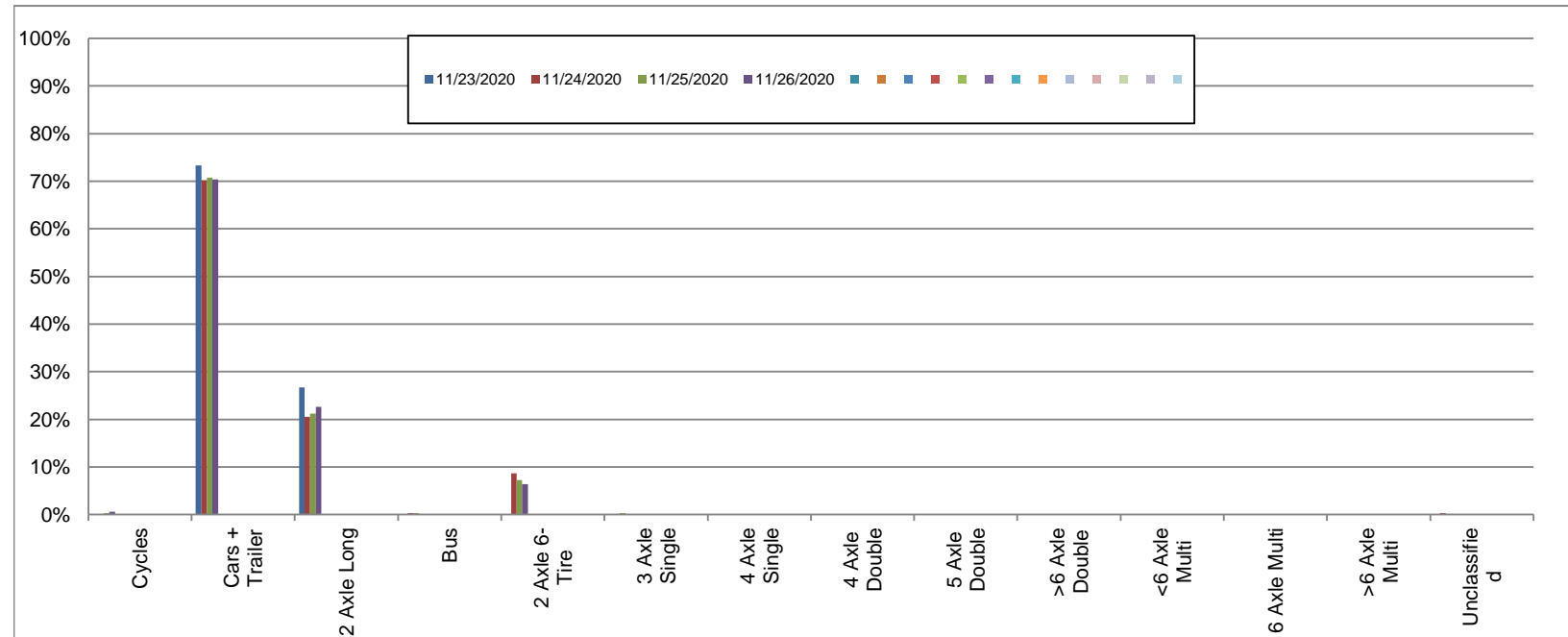
Santa Anita Ave between Hastings St and Santa Rosa Ave

Southbound
November 23, 2020 to November 26, 2020

Daily Class Bin Percentages															Daily Class Bin Volumes														
Bin #	1	2	3	4	5	6	7	8	9	10	11	12	13	14	1	2	3	4	5	6	7	8	9	10	11	12	13	14	Total Volume
Bin Class	Cycles	Cars + Trailer	2 Axle Long	Bus	2 Axle 6-Tire	3 Axle Single	4 Axle Single	4 Axle Double	5 Axle Double	>6 Axle Double	<6 Axle Multi	6 Axle Multi	>6 Axle Multi	Unclassified	Cycles	Cars + Trailer	2 Axle Long	Bus	2 Axle 6-Tire	3 Axle Single	4 Axle Single	4 Axle Double	5 Axle Double	>6 Axle Double	<6 Axle Multi	6 Axle Multi	>6 Axle Multi	Unclassified	
11/23/2020	0.0%	73.3%	26.7%	0.0%	0.0%	0.0%	0.0%	0.0%	0.0%	0.0%	0.0%	0.0%	0.0%	0.0%	0	11	4	0	0	0	0	0	0	0	0	0	0	0	15
11/24/2020	0.0%	70.2%	20.5%	0.3%	8.6%	0.0%	0.0%	0.0%	0.0%	0.0%	0.0%	0.0%	0.0%	0.3%	0	236	69	1	29	0	0	0	0	0	0	0	0	1	336
11/25/2020	0.3%	70.7%	21.2%	0.3%	7.2%	0.3%	0.0%	0.0%	0.0%	0.0%	0.0%	0.0%	0.0%	0.0%	1	244	73	1	25	1	0	0	0	0	0	0	0	0	345
11/26/2020	0.6%	70.3%	22.6%	0.0%	6.4%	0.0%	0.0%	0.0%	0.0%	0.0%	0.0%	0.0%	0.0%	0.0%	2	230	74	0	21	0	0	0	0	0	0	0	0	0	327
Total	0.3%	70.5%	21.5%	0.2%	7.3%	0.1%	0.0%	0.0%	0.0%	0.0%	0.0%	0.0%	0.0%	0.1%	3	721	220	2	75	1	0	0	0	0	0	0	1	1023	

Class Data Summary

Bin #	1	2	3	4	5	6	7	8	9	10	11	12	13	14	Total Volume
Bin Class	Cycles	Cars + Trailer	2 Axle Long	Bus	2 Axle 6-Tire	3 Axle Single	4 Axle Single	4 Axle Double	5 Axle Double	>6 Axle Double	<6 Axle Multi	6 Axle Multi	>6 Axle Multi	Unclassified	Total Volume
Survey Total	3	721	220	2	75	1	0	0	0	0	0	0	0	1	1023
% Total	0.3%	70.5%	21.5%	0.2%	7.3%	0.1%	0.0%	0.0%	0.0%	0.0%	0.0%	0.0%	0.0%	0.1%	100%
Accumulated %	0.3%	70.8%	92.3%	92.5%	99.8%	99.9%	99.9%	99.9%	99.9%	99.9%	99.9%	99.9%	99.9%	100.0%	
Inv. Accum. %	99.7%	29.2%	7.7%	7.5%	0.2%	0.1%	0.1%	0.1%	0.1%	0.1%	0.1%	0.1%	0.1%	0.0%	



Classification Descriptions

Bin #	Bin Description
1	Motorcycles
2	Passenger cars, including those with recreational trailers
3	2-axle pick-ups, vans, and RVs, including those with recreational trailers
4	Buses
5	2-axle, 6-tire single units
6	3-axle single units
7	4-axle single units
8	3-axle or 4-axle double unit
9	5-axle double unit
10	6-, 7-, or 8-axle double unit
11	5-axle multiple unit
12	6-axle multiple unit
13	7-or-more-axle multiple unit
14	Vehicles that could not be classified

Site notes: